



www.jeffreygross.co.uk

CARDIFF

VALE

CAERPHILLY

BRISTOL



Cathedral Road



Comments by Mrs Ruby Ledley



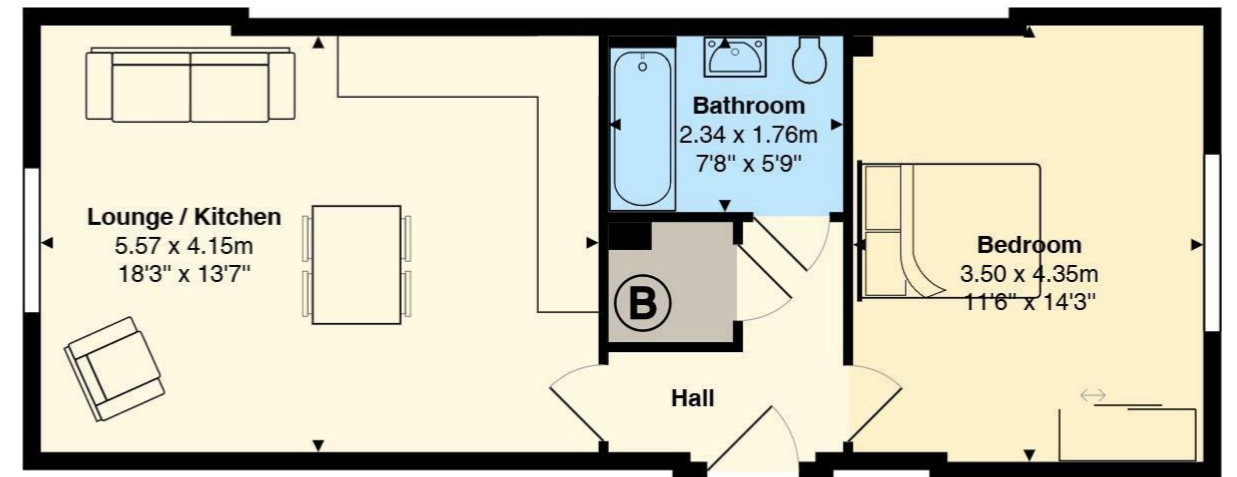
Property Specialist

Mrs Ruby Ledley

Valuer

ruby@jeffreygross.co.uk

Llys Sophia



Total Area: 48.9 m² ... 527 ft²

All measurements are approximate and for display purposes only

Comments by the Homeowner



Cathedral Road

, Cardiff, CF11 9FQ

Asking Price

£250,000



1 Bedroom(s)



1 Bathroom(s)



527.00 sq ft



Contact our

Pontcanna Branch

02920 499680

Jeffrey Ross are delighted to present this beautifully appointed one-bedroom apartment, situated within the highly sought-after Cathedral Gardens development.

Ideally located within walking distance of Cardiff City Centre, the property also benefits from close proximity to the picturesque green spaces of Sophia Gardens and Llandaff Fields, offering the perfect balance between urban convenience and peaceful surroundings.

The apartment comprises a bright and spacious open-plan kitchen, dining, and living area, designed for modern living and entertaining. The contemporary kitchen is fully equipped with integrated appliances, including a fridge freezer and dishwasher, and is complemented by ample storage and worktop space.

The property further benefits from a stylish, modern bathroom fitted with a full-size bath and overhead shower, finished to a high standard.

The generously sized double bedroom offers a comfortable and tranquil retreat, with plenty of space for furnishings.





Tenure

Service charge approx £1680 per annum - to be confirmed by your legal advisors
Ground Rent £0

Length of lease 250 years from October 2022

Kitchen Living

Bedroom

CARDIFF

VALE

CAERPHILLY

BRISTOL

www.jeffreygross.co.uk





Energy Efficiency Rating		Current	Potential
Very energy efficient - lower running costs			
(92 plus) A			
(81-91) B			
(69-80) C		73	73
(55-68) D			
(39-54) E			
(21-38) F			
(1-20) G			
Not energy efficient - higher running costs			
England & Wales		EU Directive 2002/91/EC 